

CONNECTIONS



WREC MEMBER NEWSLETTER

WREC SUPPORTS 15TH ANNUAL RAP RIVER RUN

In June, WREC participated in the 15th Annual RAP River Run at Sims Park in New Port Richey, where they served hot dogs and cold juice drinks to attendees. The event, which supports Youth and Family Alternative's RAP House for at-risk, runaway, and homeless youth, has raised over \$1.3 million. Thousands of runners of all ages, including several from WREC, took part in the community event featuring a 10K, 5K, and 3K plus a Kid's Adventure Fun Run. A special thanks goes out to all participants and the WREC team for their contributions to the event's success.



EXCITING DAY AT THE 2025 CITRUS COUNTY ALL-HAZARDS EXPO!

The WREC team had a wonderful time engaging with the community at the 2025 Citrus County All-Hazards Expo, held on Saturday, June 14th, at the College of Central Florida's Wilton Simpson Citrus Campus, where admission was free for all attendees. The WREC team was on hand to engage with attendees, ensuring everyone had the chance to learn how to be prepared. It was a privilege to speak with many of our Members about the importance of staying prepared for severe weather, emergencies, and disasters. Remember, being prepared is key! Thank you to everyone who stopped by.



POWER OUTAGE NOTIFICATIONS

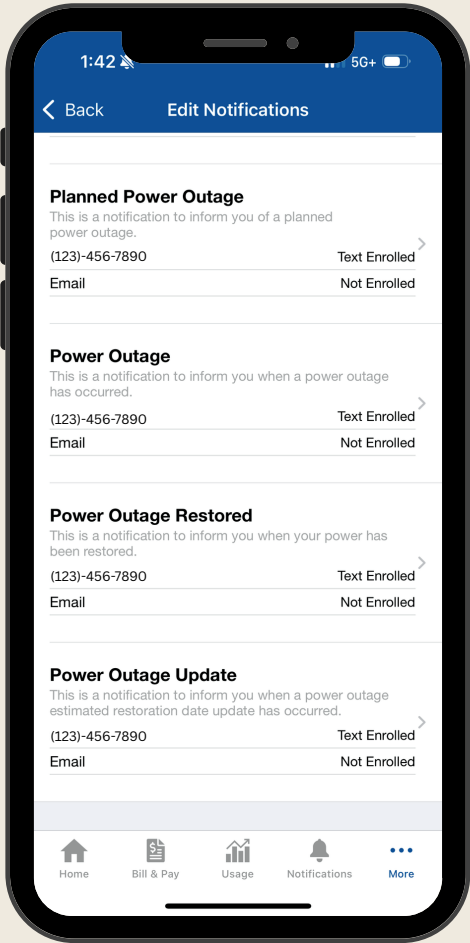
Discover the convenience of WREC's Power Outage Notifications for our Members. This essential and complimentary service helps alleviate stress during storms or outages by keeping you informed.

While our dedicated linemen work to restore power, you'll receive timely updates on when the outage began and when service is expected to resume.

Signing up is simple via the **WREC Mobile App**, allowing Members to receive notifications directly on their smart devices. Alternatively, you can register online through your **My WREC Account** at **wrec.net**. Choose to receive alerts via text, email, or both, ensuring you're always in the loop during an outage at your location.

The WREC Mobile App offers this and many other useful notifications. If you haven't already, consider subscribing to one or more of the four available notifications: *Planned Power Outage*, *Power Outage*, *Power Outage Update* and *Power Outage Restored*. These valuable alerts are designed to keep you informed whenever the lights go out.

Additionally, if your mobile phone number is linked to your account, you can easily report outages by texting "OUT" to 855-938-3431. Stay connected and informed with WREC's Power Outage Notifications.

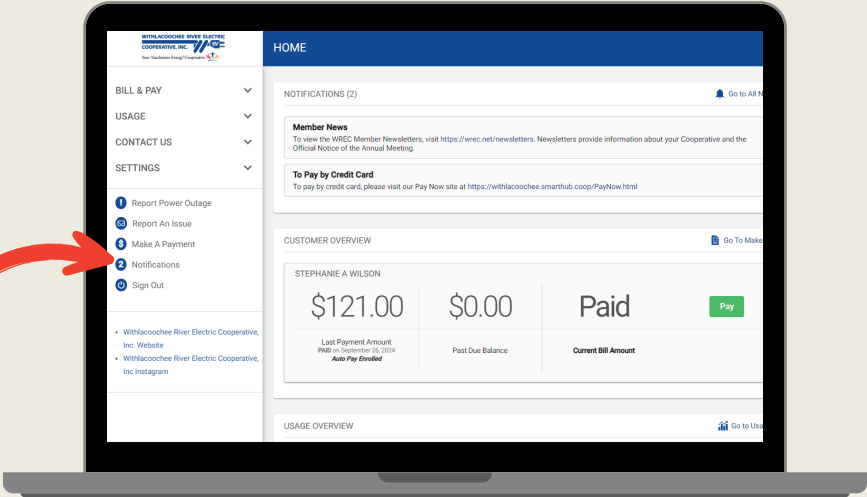


Apple



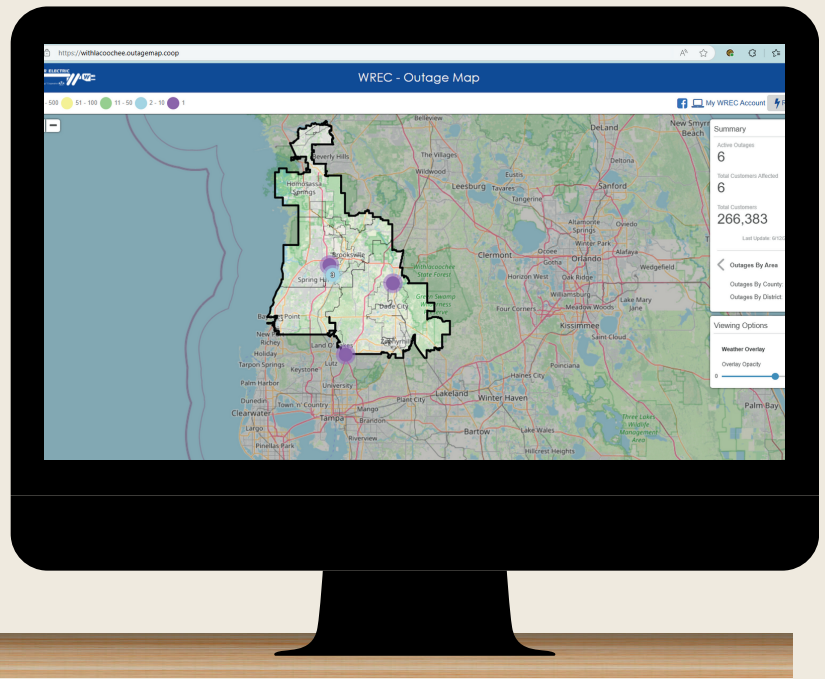
Android

Click on the “Notifications” tab on the left side of your screen here.





Scan to View
WREC's
Outage Map



Our outage map, accessible via wrec.net and the WREC Mobile App, enables Members to view current power outages. This map is continuously updated to reflect real-time conditions, keeping Members informed about repair progress and the extent of outages. It typically includes details such as the number of affected Members, the time the outage was reported, and specific areas impacted; all of which provide enhanced communication and transparency. Additionally, Members can access links to their My WREC Account login, Report an Outage, and our Facebook page, where we share live restoration updates during severe weather events like hurricanes.

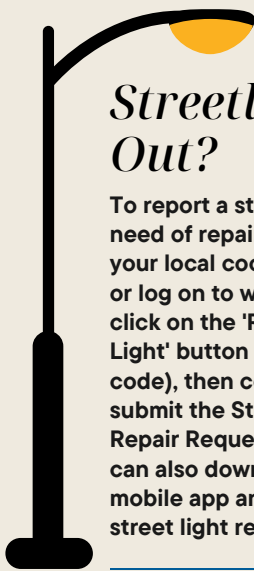
Statement of Non-Discrimination

Withlacoochee River Electric Cooperative, Inc., is the recipient of Rural Development funding assistance from the Rural Utilities Service. In accordance with Federal civil rights law and U.S. Department of Agriculture (USDA) civil rights regulations and policies, USDA, its Mission Areas, agencies, staff offices, employees, and institutions participating in or administering USDA programs are prohibited from discriminating based on race, color, national origin, religion, sex, gender identity (including gender expression), sexual orientation, disability, age, marital status, family/parental status, income derived from a public assistance program, political beliefs, or reprisal or retaliation for prior civil rights activity, in any program or activity conducted or funded by USDA (not all bases apply to all programs). Remedies and complaint filing deadlines vary by program or incident.

Program information may be made available in languages other than English. Persons with disabilities who require alternative means of communication to obtain program information (e.g., Braille, large print, audiotope, American Sign Language) should contact the responsible Mission Area, agency, or staff office; the USDA TARGET Center at (202) 720-2600 (voice and TTY); or the Federal Relay Service at (800) 877-8339.

To file a program discrimination complaint, a complainant should complete a Form AD-3027, USDA Program Discrimination Complaint Form, which can be obtained online at <https://www.ocio.usda.gov/document/ad-3027>, from any USDA office, by calling (866) 632-9992, or by writing a letter addressed to USDA. The letter must contain the complainant's name, address, telephone number, and a written description of the alleged discriminatory action in sufficient detail to inform the Assistant Secretary for Civil Rights (ASCR) about the nature and date of an alleged civil rights violation. The completed AD-3027 form or letter must be submitted to USDA by: (1) Mail: U.S. Department of Agriculture Office of the Assistant Secretary for Civil Rights 1400 Independence Avenue, SW Washington, D.C. 20250-9410; or (2) Fax: (833) 256-1665 or (202) 690-7442; or (3) Email: program.intake@usda.gov USDA is an equal opportunity provider, employer, and lender. WREC Contact: Kristina Walzak, WREC's Manager of HR, Job training & Safety. Email: kwalak@wrec.net Phone: 352-567-5133 x 6310





Streetlight Out?

To report a streetlight in need of repair, please call your local cooperative office, or log on to wrec.net and click on the 'Repair Street Light' button (or scan the QR code), then complete and submit the Street Light Repair Request Form. You can also download the WREC mobile app and request a street light repair.



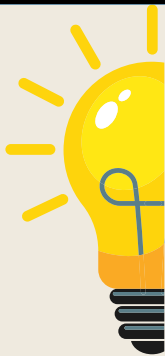
Scan to Report

LOCAL WREC NUMBERS

PASCO: Billy E. Brown Corporate Center: 352-567-5133
One Pasco Center District Office: 352-588-5115
New Tampa/Wesley Chapel: 813-979-9732
Bayonet Point District Office: 727-868-9465
Land O' Lakes/Odessa: 813-972-9233
CITRUS: Crystal River District Office: 352-795-4382
Dunnellon: 352-489-6818
HERNANDO: West Hernando District Office: 352-596-4000
POLK: One Pasco Center District Office: 863-687-4396
SUMTER: Bushnell: 352-793-7813

Pet Electrical Safety Tips

Be sure your yard is secure and properly fenced. Pets love playing outside, which can be hazardous if precautions are not taken. Fencing keeps your pets away from outdoor electrical items such as landscape lights, holiday string lights and HVAC system wiring.



DID YOU KNOW?

YOU CAN REPORT
AN OUTAGE BY
TEXTING "OUT"
TO
855-938-3431

Stay in the Know

Be sure to follow us on our social media platforms.



Scan to visit wrec.net

CONNECTIONS is published by:
Withlacoochee River Electric Cooperative, Inc.
David B. Lambert II, Executive Vice-President & General Manager
P.O. Box 278, Dade City, FL 33526-0278

Your Board of Trustees meets on the third Tuesday of each month at 10:00 a.m. at the Corporate Office in Dade City to conduct the business of the Cooperative and its subsidiaries. LEGAL NOTICE: Operation Round-Up is a registered trade name for WRECares. 100% of all contributions are available for disbursement. Registration #SC-02353. A copy of the official registration and financial information may be obtained from the Division of Consumer Services by calling toll-free from within the state. Registration does not imply endorsement, approval or recommendation by the state. 1-800-435-7352.

WITHLACOOCHEE RIVER ELECTRIC
COOPERATIVE, INC.

Your Touchstone Energy® Cooperative