

CONNECTIONS



SMALL CHANGE, BIG IMPACT

Members Uplifting Members Through Operation Round-Up

692 Families Helped with Over \$2.5 Million Disbursed to assist WREC Members in need!



Meet the Skiles Family

The Skiles family of Brooksville faced a difficult journey following a serious cancer diagnosis. Mrs. Skiles underwent an intensive course of treatment, which included multiple medical procedures and therapies. With only one income and two children at home, the family experienced significant financial strain, including the loss of their only vehicle. Thanks to support from an employer and extended family, they were able to manage transportation needs, but still needed assistance with rent.

Thanks to the heartfelt generosity of our Members through Operation Round-Up, the Skiles family received monthly support totaling \$12,000, providing vital assistance with rent during a difficult chapter in their lives. Your support helped ease their burden, allowing them to focus on recovery and prepare for her to return to work.

We're deeply grateful for the compassion and generosity shown by our Members. If you would like to contribute to Operation Round-Up, you can enroll by logging into your WREC account to start rounding up your bill to the nearest dollar each month.





OPERATION ROUND-UP HELPING CO-OP FAMILIES \$2.5 MILLION DISBURSED TO DATE!

Since its inception in 1994, Operation Round-Up has helped families who have suffered catastrophic events due to no fault of their own. To date, the program has disbursed \$2,596,982.15 to help Members in need.

Unlike many other charities, every dollar that is donated to ORU is available for distribution.

**This Program Would Not Be Successful Without
The Generosity of Our Members.**

**For the Previous 12
Month Period
Operation Round-Up
has Helped
5 Families**

Date	Last Name	Amount	Reason
8/26/2024	Skiles	\$12,000.00	Cancer/Rent
8/1/2024	Reubens	\$12,000.00	Death/Mortgage
12/21/2024	King	\$7,650.00	Back Injury/Shower Install
1/9/2025	Crocker	\$9,203.00	Heart Disease/Cancer / New AC
7/22/2025	Wright/Foland	\$4,666.88	Cancer / Mortgage

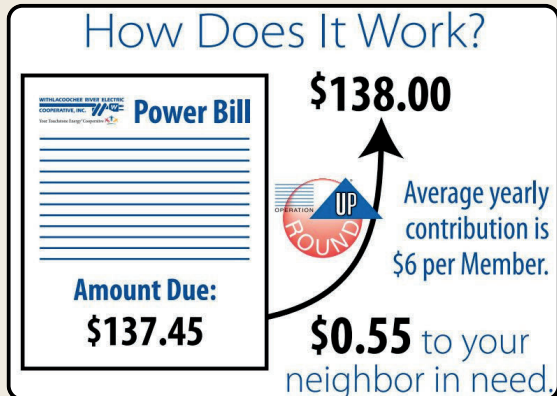
TOTAL: \$45,519.88

Operation Round-Up funds are contributions made by our Members who round up their bill to the nearest dollar, typically donating less than \$0.50 per month! These funds are dedicated to supporting local initiatives and community needs and are not used to cover electric bills. The program is overseen by a Board of Trustees representing the Cooperative's nine districts.

Joining Operation Round-Up is straightforward! You have the option to sign up conveniently online by logging into your WREC account at wrec.net or through our WREC mobile app. You can also enroll by contacting your local WREC office.



How Does It Work?



Your participation allows us to collectively make a meaningful impact in our community, supporting our fellow neighbors in need. Together, we can make a difference! If you are needing assistance from Operation Round-Up please visit wrec.net for information on how to apply, or scan the QR code.

**Join Operation Round-Up today and start
making a difference in your community!**

"Operation Round-Up is an easy and powerful way for our Members to help other Members in need. It's a small contribution that collectively makes a big difference in our communities."

**- David B. Lambert II, WREC Executive Vice - President &
General Manager**



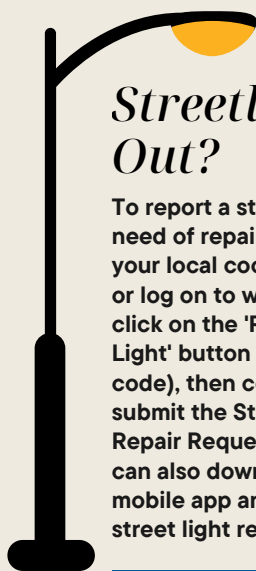


IN THE FIGHT TOGETHER: WREC GOES PINK FOR BREAST CANCER SUPPORT

This month, you may notice our linemen wearing pink hard hats. This small but powerful change is our way of showing support in the fight against breast cancer. By donning pink, we stand in solidarity with those affected, raise awareness, and honor the strength and resilience of survivors and their families.

In addition to the pink hard hats, WREC proudly hosts a company-wide Pink Day each October, where employees across all departments wear pink to show unified support. It's a visible reminder that we're committed to making a difference — both on the job and in our communities. With WREC, no one fights alone.





Streetlight Out?

To report a streetlight in need of repair, please call your local cooperative office, or log on to wrec.net and click on the 'Repair Street Light' button (or scan the QR code), then complete and submit the Street Light Repair Request Form. You can also download the WREC mobile app and request a street light repair.



Scan to Report

LOCAL WREC NUMBERS

PASCO: Billy E. Brown Corporate Center: 352-567-5133
One Pasco Center District Office: 352-588-5115
New Tampa/Wesley Chapel: 813-979-9732
Bayonet Point District Office: 727-868-9465
Land O' Lakes/Odessa: 813-972-9233

CITRUS: Crystal River District Office: 352-795-4382
Dunnellon: 352-489-6818

HERNANDO: West Hernando District Office: 352-596-4000

POLK: One Pasco Center District Office: 863-687-4396

SUMTER: Bushnell: 352-793-7813

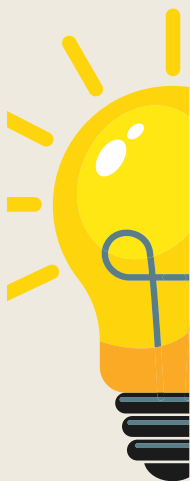
Stay in the Know

Be sure to follow us on our social media platforms.



Scan to visit wrec.net

WREC proudly supports Breast Cancer Awareness Month and is committed to the fight against cancer.



DID YOU KNOW?

THE WREC EDUCATIONAL FOUNDATION IS NOW
AWARDING SCHOLARSHIPS TO
130 GRADUATING SENIORS,
OUR LARGEST GROUP YET!
APPLICATIONS ARE NOW
OPEN AT WREC.NET.

CONNECTIONS is published by:
Withlacoochee River Electric Cooperative, Inc.
David B. Lambert II, Executive Vice-President & General Manager
P.O. Box 278, Dade City, FL 33526-0278

Your Board of Trustees meets on the third Tuesday of each month at 10:00 a.m. at the Corporate Office in Dade City to conduct the business of the Cooperative and its subsidiaries. LEGAL NOTICE: Operation Round-Up is a registered trade name for WRECares. 100% of all contributions are available for disbursement. Registration #SC-02353. A copy of the official registration and financial information may be obtained from the Division of Consumer Services by calling toll-free from within the state. Registration does not imply endorsement, approval or recommendation by the state. 1-800-435-7352.



**WITHLACOOCHEE RIVER ELECTRIC
COOPERATIVE, INC.**

Your Touchstone Energy® Cooperative