

Your Touchstone Energy® Cooperative 



CONNECTIONS

WREC MEMBER NEWSLETTER

Dear Members,



As 2025 comes to a close, I'm proud to reflect on the meaningful progress we've made together, not just in powering homes and businesses, but in extending the power of community. This year, Withlacoochee River Electric Cooperative returned \$24.2 million in Capital Credits to our Members, bringing total refunds to over \$530 million—more than any other electric Cooperative in Florida. As a Member-owned organization, our progress is a shared success, with you at the heart of it.

Your Cooperative has deepened our commitment to the communities we serve by proudly sponsoring the construction of two low-income homes through Habitat for Humanity and the You Thrive Florida House to Home programs, helping families achieve the dream of safe, stable housing. We also supported Feeding Pasco's Elderly, ensuring vulnerable seniors receive the nourishment and care they deserve.

Our Operation Round-Up Foundation continues to be a beacon of hope for Members who have experienced catastrophic events through no fault of their own, offering assistance during times of crisis. Our Educational Foundation awarded 110 scholarships to graduating high school seniors, investing in the future of our youth and empowering the next generation of leaders.

Your Cooperative proudly represented Florida as the first electric Cooperative in the state to participate in the Light Up Navajo initiative, helping bring electricity to homes without power. It was a humbling experience and a powerful example of the Cooperative spirit in action.

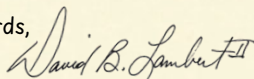
Our team proudly participated in multiple Great American Teach-Ins, supported impactful organizations like Vincent House and Scouting America, and remained dedicated to fostering economic development and job creation throughout the region.

Throughout the year, we've remained focused on strengthening our electrical system to enhance storm resilience and reliability. Our dedicated crews and engineers have worked to build a more robust infrastructure, ensuring we continue to deliver safe, dependable, and affordable electricity to you, our Members.

These efforts reflect the true spirit of cooperation, neighbors helping neighbors, communities lifting each other up, and a shared commitment to making a difference.

As we look ahead to 2026, we remain dedicated to serving you with excellence and heart. Thank you for being a vital part of our Cooperative family. Wishing you and your loved ones a joyful holiday season, a Merry Christmas, and a bright new year.

Warm regards,



David B. Lambert II
Withlacoochee River Electric Cooperative

**Announcing
\$24.2 Million Capital
Credit Refund!**



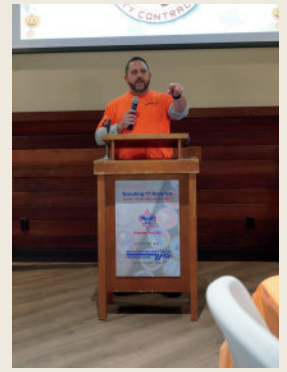
David Lambert,
WREC General Manager

A Spooktacular Morning of Giving: WREC Raises Over \$30K for Scouting America

Your Cooperative hosted a spirited breakfast fundraiser in support of Scouting America, and the results were nothing short of incredible. Thanks to the generosity of our sponsors and the unwavering support of our community, we raised an outstanding \$30,000!

But this event was more than just a fundraiser. It was a celebration of community, leadership, and the power of giving back. Every dollar raised went directly to the scouts and is an investment in the future of our youth, helping Scouting America continue its mission of developing confident, capable leaders for tomorrow.

We extend our heartfelt thanks to everyone who attended, donated, and helped make this morning a resounding success. WREC is proud to stand behind organizations that make a lasting impact, and we remain committed to supporting the community we call home.



Powering Possibilities: WREC Inspires the Next Generation

WREC is proud to participate in local high school career fairs, engaging with students to spark interest in careers within the energy industry. These events provide a valuable opportunity for WREC to introduce students to a wide range of career paths, from linework and engineering to communications and Member service, while encouraging them to explore their future potential. Through these efforts, WREC continues its commitment to education, workforce development, and investing in the leaders of tomorrow.

Above: WREC at the Expanding Agriculture Expo.



Above: WREC at the River Ridge High School College and Career Fair.



Above: WREC at the Citrus High School College and Career Fair.

Announcing \$24.2 Million Capital Credit Refund!

Some Common Questions About Capital Credits

At Withlacoochee River Electric Cooperative, Inc., (WREC), we believe in the power of community and the importance of giving back to our Members. One of the unique benefits of being a part of our Cooperative is the concept of Capital Credits. But what exactly are Capital Credits, and how do they benefit you?

What are Capital Credits?

Capital Credits are an allocation of funds that represent a Member's share of the ownership in the Cooperative, also known as Member equity. At the end of each year, after all operating expenses have been paid, the remaining margins are allocated to each Member based on the amount of energy purchased. The amount refunded from a Member's accumulated total is determined by WREC's Board of Trustees and legal requirements. When WREC earns more than it spends, these margins are allocated back to you, our valued Members, as a token of appreciation for your support and participation in our Cooperative.

How Does It Work?

- **Allocation:** At the end of each year, WREC allocates margins to Members. The amount allocated to each Member is based on the amount of electricity you purchased during the year. Your allocated amount will be indicated on your bill, typically issued in April, or via letter for previous patrons.
- **Retirement:** Capital Credits are usually retired in December and show up as a credit on your bill or as a check if you are no longer an active Member of the Cooperative. The retirement process is determined by the financial health of the Cooperative and the policies set by the Board of Trustees.

Why It Matters?

- **Ownership:** As a Member of WREC, you are a part owner of the Cooperative. This means you have a stake in our success.
- **Savings:** Capital Credits provide a financial benefit to you, allowing you to enjoy the fruits of our Cooperative's financial success.
- **Community:** By being a part of WREC, you are supporting a Cooperative that invests in local growth and sustainability. Your participation helps us to continue providing reliable and affordable energy to our community.

We are proud to serve you and to share the benefits of our Cooperative's success.

Where Can You Get Additional Information On Capital Credits?

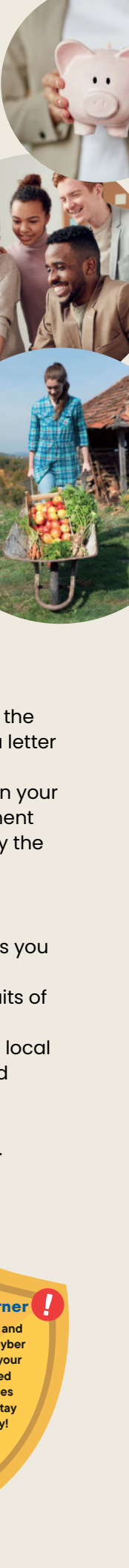
Visit us online at wrec.net or contact a Member Service Representative at one of our offices.

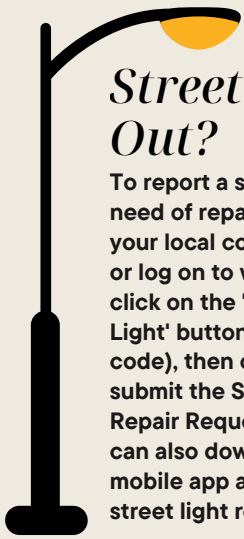


To learn more about Capital Credits, scan the QR code.

Cyber Safe Corner

Update your devices and software to prevent cyber attacks and protect your data. Using outdated technology increases your vulnerability. Stay safe—update today!





Streetlight Out?

To report a streetlight in need of repair, please call your local cooperative office, or log on to wrec.net and click on the 'Repair Street Light' button (or scan the QR code), then complete and submit the Street Light Repair Request Form. You can also download the WREC mobile app and request a street light repair.



Scan to Report

LOCAL WREC NUMBERS

Billy E. Brown Corporate Center: 352-567-5133
One Pasco Center District Office: 352-588-5115
Bayonet Point District Office: 727-868-9465
West Hernando District Office: 352-596-4000
Crystal River District Office: 352-795-4382

Stay in the Know

Be sure to follow us on our social media platforms.

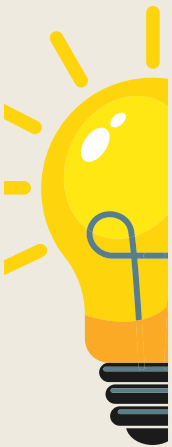


Scan to visit wrec.net

Energy Saving Tips



To save energy and stay warm this winter, we recommend setting your thermostat to 68°F when home, using space heaters only when necessary, and letting sunlight in through south-facing windows. Sealing drafts around doors and windows and closing off unused rooms can also help conserve heat and reduce energy costs.



DID YOU KNOW?

WREC OFFERS AN INTERACTIVE OUTAGE MAP AND OUTAGE ALERTS. SIGN UP AT WREC.NET OR THROUGH THE WREC MOBILE APP.

CONNECTIONS is published by: Withlacoochee River Electric Cooperative, Inc.

David B. Lambert II, Executive Vice-President & General Manager P.O. Box 278, Dade City, FL 33526-0278

Your Board of Trustees meets on the third Tuesday of each month at 10:00 a.m. at the Corporate Office in Dade City to conduct the business of the Cooperative and its subsidiaries. LEGAL NOTICE: Operation Round-Up is a registered trade name for WRECares. 100% of all contributions are available for disbursement. Registration #SC-02353. A copy of the official registration and financial information may be obtained from the Division of Consumer Services by calling toll-free from within the state. Registration does not imply endorsement, approval or recommendation by the state. 1-800-435-7352.

WITHLACOOCHEE RIVER ELECTRIC
COOPERATIVE, INC.



Your Touchstone Energy® Cooperative

