


**WITHLACOOCHEE RIVER ELECTRIC
COOPERATIVE, INC.**



Your Touchstone Energy® Cooperative 

WREC'S UPCOMING HOLIDAY SCHEDULE

All WREC offices will be closed on...
Christmas Holiday - Monday December 25th &
Tuesday December 26th.
New Year's Holiday - Monday January 1, 2024.

Connections

WREC MEMBER NEWSLETTER

'Tis the season, WREC is in the Spirit of Giving



Dear Members,

The holidays are a season not only of rejoicing, but of reflection. This year your Cooperative experienced another year of growth, averaging 700 new service accounts a month. Despite supply chain constraints, we've been able to successfully keep up with this growth.

Your Board of Directors authorized a record setting \$23.2 million Capital Credit refund! We are proud to have refunded \$482 million in Capital Credits to our Members to date. We believe in sharing our success with you, and this year's Capital Credit refund is a testament to that commitment.

In keeping true to our founding principle of "Concern for Community", throughout the year we continued to invest in the needs of our communities. This year, your Cooperative partnered with organizations such as Boy Scouts of America, Habitat for Humanity, Mid-Florida Community Services, Special Olympics, United Way and many more. These organizations align closely with WREC's commitment to improving the lives of our Members. Through financial support, volunteer efforts, and various community development projects, WREC actively participates in bettering the communities we call home.

We have so many reasons to be thankful this year. Hurricane Idalia was projected to deliver a direct impact on our service area. Although we experienced some damage and flooding, we are fortunate to avoid any loss of life and the Cooperative was able to have most of our Members energized in one and a half days. Once crews completed restoration to our lines, we sent 86 linemen and support personnel to assist Central Florida, Suwannee Valley, and Tri-County Electric Cooperatives. We are proud of our employees and grateful for their willingness to leave their families and help others in need.

Throughout the year our employees also raised money to support WREC's Angel Tree Giving Program. This program provides toys and clothing to children in need, in our communities, so they can experience the joy of Christmas. As we celebrate this holiday season, I want to express my deepest gratitude to you, our Members, for your ongoing trust, support, and engagement. We are honored to serve you, and we look forward to continuing our mission of providing resilient and affordable energy while actively contributing to the communities we serve. On behalf of WREC, I wish you and your loved ones a joyful and peaceful holiday season. May the New Year bring health, happiness, and prosperity to all.

Sincerely,

Executive Vice President & General Manager



**WITHLACOOCHEE RIVER ELECTRIC
COOPERATIVE, INC.**



Your Touchstone Energy® Cooperative 



SOME COMMON QUESTIONS ABOUT Capital Credits

What are Capital Credits?

Capital Credits are an allocation of funds that represent your share of the ownership in the Cooperative. Capital Credits can also be called equity or your investment in the Cooperative. Withlacoochee River Electric Cooperative, Inc. is a *Member-Owned*, not-for-profit organization. At the end of each year and after all operating expenses have been paid, the remaining margins are allocated to each Member based on the amount of energy purchased during the year. This allocation of margins is referred to as Capital Credits.

When Are Capital Credits Refunded?

Your refund will show as a credit on your December 2023 bill. Checks will be mailed to Members with multiple active accounts and past patrons.

Will WREC Refund All of These Capital Credits?

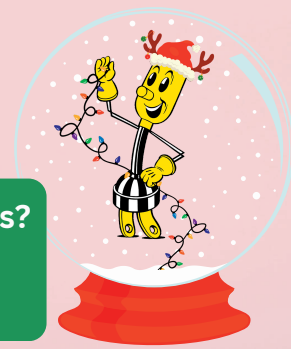
Yes, as a non-profit organization 100% of the margins must be returned to Member-Owners. Members who had service in 2022 or before with the Cooperative will receive a refund based on a percentage of the total of their accumulated Capital Credits.

What Happens If You Move Off The Lines of The Cooperative?

Your Capital Credits will be held in the account's name until they are refunded. You will receive a refund each year that the Cooperative makes a general refund, mailed to the most current address on file. You must keep the Cooperative notified of address changes; otherwise, you may not receive your entitled refund check when mailed.

Where Can You Get Additional Information On Capital Credits?

Visit us online at wrec.net or contact a Member Service Representative in one of our offices.



To Report An Inoperative Or Malfunctioning Street Light

Please call your local Cooperative Office, OR you may also log on to wrec.net and click on the Repair Street Light button, then complete and submit the Street Light Repair Request Form, or you can download the SmartHub app and request a street light repair.

CONNECTIONS is published by: Withlacoochee River Electric Cooperative, Inc.

David B. Lambert II, Executive Vice-President & General Manager
P.O. Box 278, Dade City, FL 33526-0278

VISIT US ON THE INTERNET AT: WREC.NET

Your Board of Trustees meets on the Third Tuesday of each month at 10:00 a.m. at the Corporate Office in Dade City to conduct the business of the Cooperative and its' subsidiaries.

LEGAL NOTICE: Operation Round-Up is a Registered Trade Name for WRECares. 100% of all contributions are available for disbursement. Registration #SC-02353. A copy of the official registration and financial information may be obtained from the Division of Consumer Services by calling toll-free from within the state. Registration does not imply endorsement, approval or recommendation by the State. 1-800-435-7352.

WITHLACOOCHEE RIVER ELECTRIC COOPERATIVE, INC.

Connections

WREC MEMBER NEWSLETTER

WREC OFFICES

PASCO: Billy E. Brown Corporate Center: 352-567-5133 - Dade City, FL
One Pasco Center District Office: 352-588-5115 | New Tampa/Wesley Chapel: 813-979-9732
Bayonet Point District Office: 727-868-9465 | Land O' Lakes/Odessa: 813-972-9233
CITRUS: Crystal River District Office: 352-795-4382 | Dunnellon: 352-489-6818
HERNANDO: West Hernando District Office: 352-596-4000
POLK: One Pasco Center District Office: 863-687-4396
SUMTER: Bushnell: 352-793-7813

FOLLOW US ON

