

# CONNECTIONS



WREC MEMBER NEWSLETTER



## WREC's Pre-Apprentice Line Technician Orientation - Focusing on Safety and Training

At WREC, our Line Technicians begin their 5-year training program as Pre-Apprentices. WREC conducts an orientation for these employees to instill essential safety practices and provide learning opportunities from experienced Journeymen (linemen who have completed all their training).

The Pre-Apprentice Orientation has proven to be highly beneficial for all participants. Over the course of three days, we emphasize the importance of safety rules and safe work practices that are in place to protect the line workers and the general public. Comprehensive instruction is given on the proper use and maintenance of all personal protective equipment (PPE). Participants gain knowledge about the diverse materials and tools associated with both underground and overhead lines, including techniques for identifying faults and troubleshooting transformer connections.



During a session at the transformer shop, participants learn the correct assembly of overhead and underground transformers. Journeymen demonstrate various equipment such as digger derricks, bucket trucks, and excavators. They educate on bucket rescue procedures, pre-trip inspections, safe operational techniques for digger derricks (including loading and unloading poles), and proper handling and securing practices for excavators.

This intensive three-day program provides a wealth of information, equipping participants with valuable skills and knowledge to strengthen their capabilities and ensure a strong career launch for these new linemen.

## Energy Saving Tips



Save money on your laundry with these simple tips! Did you know that 90% of the energy used by your washing machine goes towards heating water? Save money by using the cold water cycle instead. Remember to wash only full loads and set your washer to the most efficient setting. For drying, always clean the lint filter. Additionally, consider hanging some items to dry naturally.



# A little effort goes a long way HELP OFFSET PEAK ENERGY DEMAND BY BEATING THE PEAK!

Conserve energy by adjusting your usage to off-peak times of the day. Small changes can reduce your energy costs, resulting in lower bills and lighten the load on the power grid.

## BEFORE 8:00 A.M

Use the oven, shower, do laundry



## 8:00 A.M TO 3:00 P.M

Close window coverings, unplug appliances not in use



## AFTER 3:00 P.M

Grill supper outdoors, use countertop appliances instead of oven



## AFTER 8:00 P.M

Wash dishes, set the dishwasher or other appliances to start after 10:00 p.m, shower



## OVERNIGHT

Charge your electric vehicle



You can contribute by making these energy adjustments throughout your day:

- Turn up your thermostat
- Use fans in occupied rooms to cool off
- Turn off and disconnect electronics not in use
- Turn off lights
- Turn off stand-alone dehumidifiers
- Turn off all non-essential pumps and motors

## Cyber Safe Corner



Be cautious when scanning QR codes received via email, as cyber attackers frequently use them to plunder information and gain unauthorized entry into your personal accounts.

## Pet Electrical Safety Tips

Be sure your yard is secure and properly fenced. Pets love playing outside, which can be hazardous if precautions are not taken. Fencing keeps your pets away from outdoor electrical items such as landscape lights, holiday string lights and HVAC system wiring.



## DID YOU KNOW?

WREC'S JOURNEYMAN LINE TECHNICIANS GO THROUGH A 5-YEAR TRAINING PROGRAM. THEY WILL COMPLETE A TOTAL OF 10,000 ON-THE-JOB TRAINING HOURS BY THE END OF THE PROGRAM!

In previous issues we inadvertently misspelled the name of Ernie Wever Youth Park as "Ernie Weaver Youth Park." We sincerely apologize for this error and any confusion it may have caused. The correct name of the park is indeed Ernie Wever Youth Park. We acknowledge the importance of accuracy in all our communications and regret any inconvenience caused by our mistake. Thank you for your understanding.

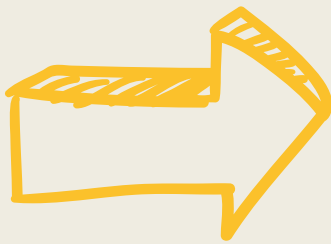
- Withlacoochee River Electric Cooperative, INC.



**Start saving today!** Did you know WREC has a free benefit program that provides our Members with discounts from local businesses within the community? It is true! Co-op Connections is a free program that we offer to our Members. Members can earn discounts from clothing, dining, automotive, entertainment, and much more. This program is easy to use, so download the Co-op Connections app for free to register today and start saving!



**For businesses** interested in participating in this wonderful program or Members looking for more information please visit [connections.coop](http://connections.coop) or scan the QR code to the left to sign up for this money saving program.



## MOVE OVER

## IT'S THE LAW

When approaching an authorized emergency, sanitation, or **utility service** vehicle on the side of the road, do not forget to do the following:

- Move out of the lane closest to their vehicle. Slow down and proceed with caution.
- If you cannot move over, slow down to 20 miles per hour under the posted speed limit.

This is especially important to remember during storm season when there are more trucks out restoring power. Thanks for helping keep our crews safe!



## Streetlight Out?

To report an inoperative or malfunctioning streetlight, please call your local cooperative office, or log on to [wrec.net](http://wrec.net) and click on the 'Repair Street Light' button (or scan the QR code), then complete and submit the Street Light Repair Request Form. You can also download the SmartHub™ app and request a street light repair.



Scan to Report

### LOCAL WREC NUMBERS

**PASCO:** Billy E. Brown Corporate Center: 352-567-5133  
One Pasco Center District Office: 352-588-5115  
New Tampa/Wesley Chapel: 813-979-9732  
Bayonet Point District Office: 727-868-9465  
Land O' Lakes/Odessa: 813-972-9233  
**CITRUS:** Crystal River District Office: 352-795-4382  
Dunnellon: 352-489-6818  
**HERNANDO:** West Hernando District Office: 352-596-4000  
**POLK:** One Pasco Center District Office: 863-687-4396  
**SUMTER:** Bushnell: 352-793-7813

**56% of homeowners plan to dig without notifying 811 in the next year.**



**Contact 811. Every Dig. Every Time.**

**CGA** \*Based on March 2024 polling



CONNECTIONS is published by:

Withlacoochee River Electric Cooperative, Inc.

David B. Lambert II, Executive Vice-President & General Manager  
P.O. Box 278, Dade City, FL 33526-0278

## Stay in the Know

Be sure to follow us on our social media platforms.



Scan to visit [wrec.net](http://wrec.net)

Your Board of Trustees meets on the third Tuesday of each month at 10:00 a.m. at the Corporate Office in Dade City to conduct the business of the Cooperative and its subsidiaries. LEGAL NOTICE: Operation Round-Up is a registered trade name for WRECares. 100% of all contributions are available for disbursement. Registration #SC-02353. A copy of the official registration and financial information may be obtained from the Division of Consumer Services by calling toll-free from within the state. Registration does not imply endorsement, approval or recommendation by the state. 1-800-435-7352.

**WITHLACOOCHEE RIVER ELECTRIC  
COOPERATIVE, INC.**



Your Touchstone Energy® Cooperative

